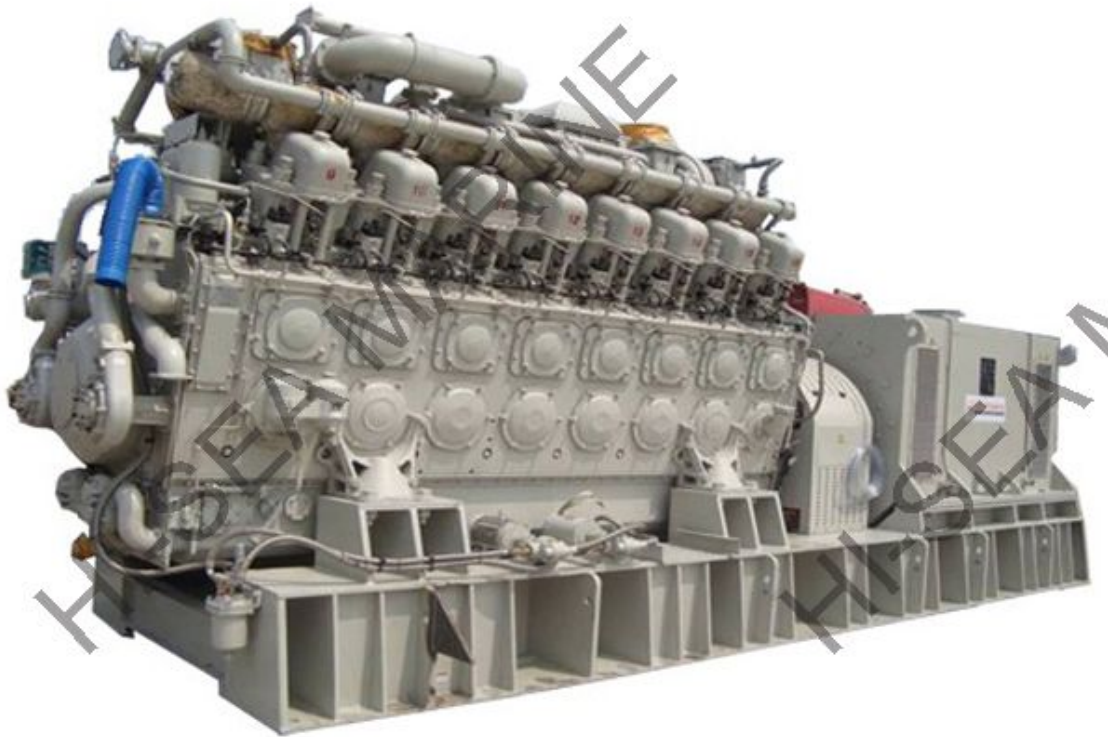


## MWM marine generator set



### MWM marine generator set features:

- 1.Power :50Kw-1700Kw(187.5KVA-2125KVA).
- 2.Frequency:50HZ/60HZ; speed:1500rpm/1800rpm.
- 3.Engine: HND-MWM TBD234V8/V12,TBD236V8/V12,TBD620V16.
- 4.Alternator: Marathon , Sunvim, Stamford, Siemens ,LEROY-SOMER.
- 5.EIAPP, Meet requirements of IMO for NOx Standard.
- 6.CCS、 ABS、 BV、 DNV、 GL approved .
- 7.High reliability and long life span.
- 8.Warranty: 1 year or 1000hours warranty.



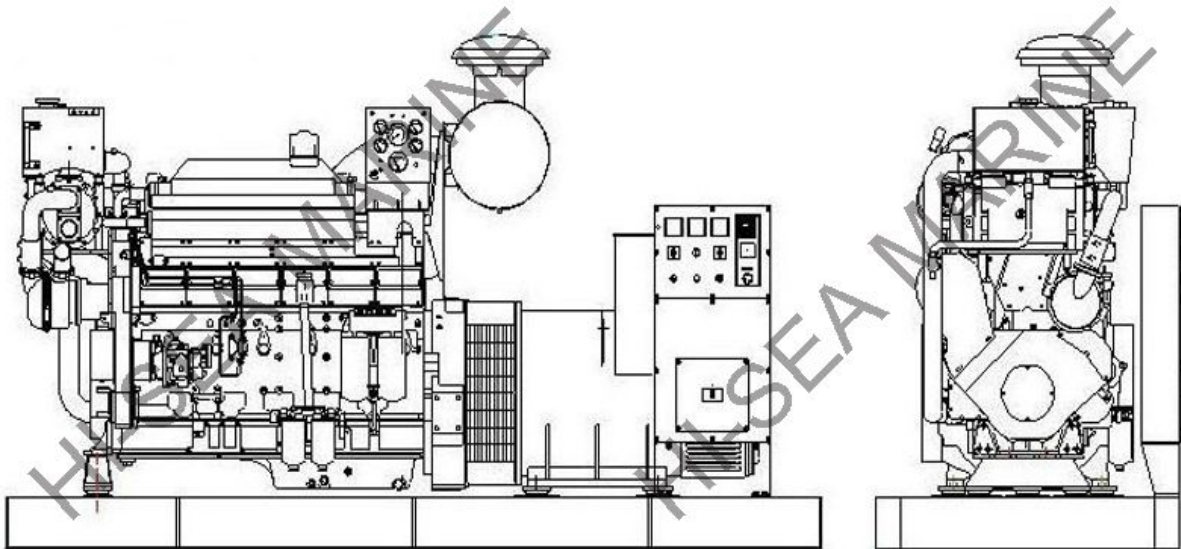
1300kw MWM marine generator set



Siemens alternator



STAMFORD alternator



MWM marine generator set drawing

**Chongqing Hi-Sea Marine Equipment Import&Export Co.,Ltd.**

**Address:** 20-5,General Chamber of Commerce Building, No.2 Hongjin Street, Yubei District, Chongqing, China

**Email:** machine@hiseamarine.com mitang0708@foxmail.com **Skype:** cncqtang **QQ:** 2278612160

**TEL:** +86-23-67032301 **FAX:**+86-23-67955123 **Mobile:** +86-18108354610 **Post Code:**401147

**Website:** www.hiseamarine.com www.chinahisea.com