

钢质带舷窗风雨密防火门(A-60)

A-60 STEEL FIRE PROOF WEATHERTIGHT DOOR WITH SCUTTLE

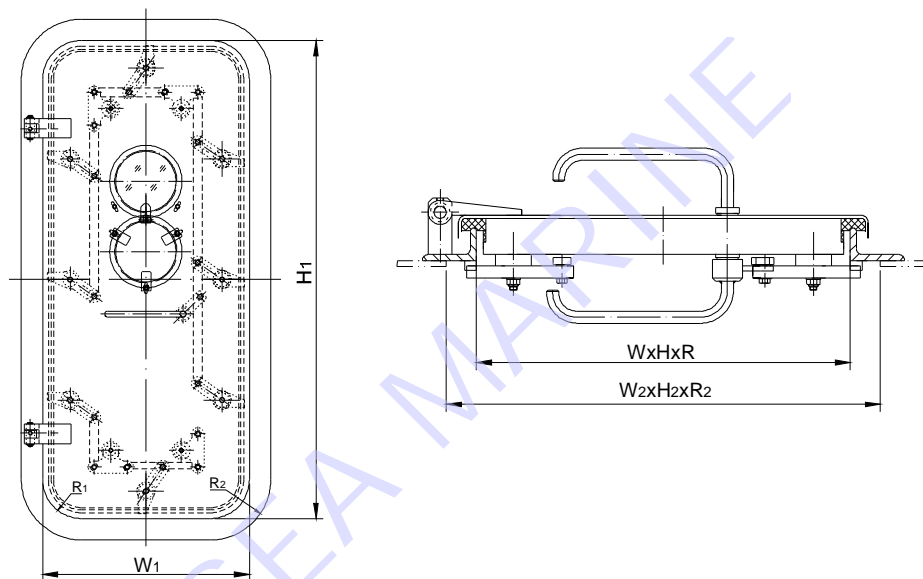
钢质带窗风雨密防火门用于外围壁及防火区域走道A级分隔以上，同时也用于一些重要物品存储室等。

该品质能满足：1987年钢质海船入级与建造规范规定，国际海事组织（IMO）《耐火试验程序》附件1（FTPL）第三部分及修正后的《1974年海上人命安全公约》规范。

STEEL FIRE PROOF WATERTIGHT DOOR WITH SCUTTLE IS NORMALLY USED ON THE OUTSIDE OF WALL AND FOR THE PASSAGE WAY OF FIRE-PROTECTION AREA CLASS A DIVISION AND ALSO FOR STORE OF PROVISION.

THIS DOOR COULD MEET THE REQUIREMENT OF ZC 1987, THE REQUIREMENTS OF IMD ANNEX 1.(FTPL)PARTS 3 AND SOLAS 1974 AMENDED.

1. 钢质带舷窗风雨密防火门 STEEL FIRE PROOF WEATHERTIGHT DOOR WITH SCUTTLE



2. 门的规格 c

规格号 CODE OF SPECIFICATION	通孔尺寸 SIZE OF CLEAR OPENING WxHxR	门扇外形尺寸 SIZE OF DOOR LEAF W1xH1xR1	围壁开口尺寸 OPENING SIZE OF WALL W2xH2xR2	重量(Kg) WEIGHT
1460	1400x600xR100	1458x658xR129	1500x700xR150	217.8
1560	1500x600xR100	1558x658xR129	1600x700xR150	230.7
1660	1600x600xR100	1658x658xR129	1700x700xR150	243
1670	1600x700xR100	1658x758xR129	1700x800xR150	257.4
1680	1600x800xR100	1658x858xR129	1700x900xR150	271.7
1690	1600x900xR100	1658x958xR129	1700x1000xR150	290.5
1890	1800x900xR100	1858x958xR129	1900x1000xR150	311.7

标记示例

通孔尺寸为1600x600门扇厚6mm，右外开式，钢质带舷窗风雨密防火门：

钢质带舷窗风雨密防火门

1600x600-6 RO 262.11HS13-00