

# 液 压 滑 动 式 水 密 门

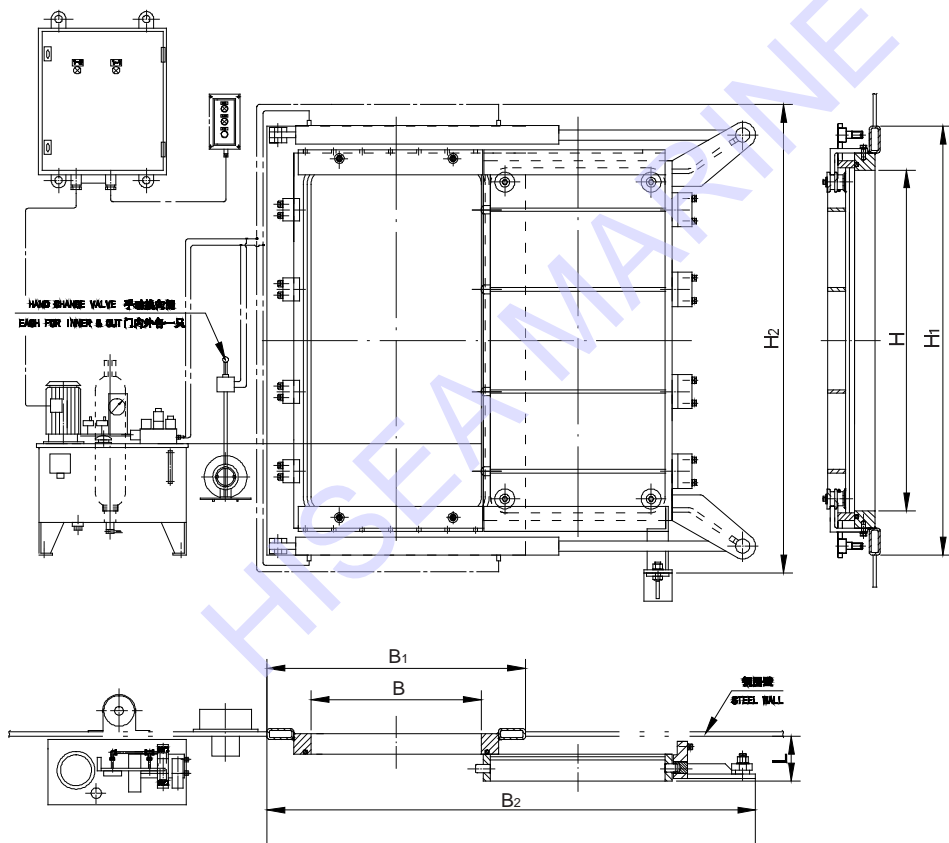
## HYDRAULIC SLIDING WATERTIGHT DOOR

本产品用于船舶水线以下的水密隔壁处开口上的门，一般用于机舱与轴隧间，机舱与锅炉间，主机舱与副机舱间等。产品能够满足1987年钢质海船入级与建造规范规定。

产品能够在机舱的两面进行手动操纵关闭和开启，而且设液压管路能够在机舱两面进行手动液压操纵，并在甲板上设手动液压操纵手柄。

THIS DOOR USED FOR WATERTIGHT DIVISION BELOW SHIP WATER LINE, IT USUALLY BE USED BETWEEN ENGINE ROOM AND SHAFT PASSAGE, ENGINE ROOM AND MAIN ENGINE ROOM AND AUXILIARY ENGINE ROOM, MEET THE REQUIREMENT OF ZC 1987.

THIS DOOR CAN BE OPENED AND CLOSED BY STROKEHOLD, MANUALLY AT BOTH SIDES OF ENGINE ROOM. AND HYDRAULIC PIPES WILL BE LAID FOR MANUAL HYDRAULIC OPERATION. THE HANDLE INSTALLED ON THE DECK.



通孔尺寸 SIZE OF CLEAR OPENING BxH	围壁开孔尺寸 OPENING SIZE OF WALL B <sub>1</sub> xH <sub>1</sub>	最大外形尺寸 SIZE OF OUTSIDE B <sub>2</sub> xH <sub>2</sub>	L	开 向 OPENING DIRECTION
500x1000	810x1310	1520x1450	158	左L
600x1200	910x1510	1720x1650	158	
700x1400	1010x1710	2120x1850	158	右R

### 标记示例

滑动尺寸为600x1200mm右开液压滑动式水密门  
 滑动式水密门 SLIDING WEATHERTIGHT DOOR  
 R 600x1200 262.11HS10-00