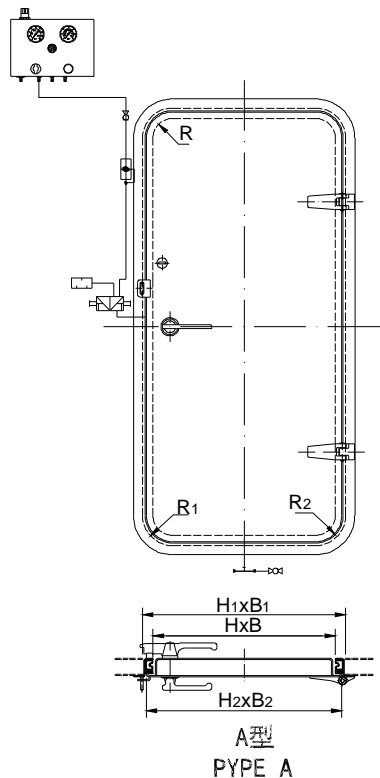


气密门

GASTIGHT DOOR

适用于各类船舶闪点小于60℃的油船、钻井平台、液化气船、化学品船和采油区拖轮等。

USED FOR SHIPS THAT FLASH POINT < 60℃ OF OIL TANKER, DRILLING PLATFORM, CHEMICAL VESSEL AND PRODUCTION ZONE TUG ETC.



TYPE	NAME	OPENING DIRECTION	门扇材料 MATERIAL OF DOOR LEAF	气密性能 GASTIGHT PERFORMANCE (压力差维持值) (PA)
A		左开 L 右开 R		500
B				100
C				0

穿孔尺寸 SIZE OF CLEAR OPENING HXB	围壁开口 OPENING SIZE OF WALL H ₁ XB ₁	SIZE OF DOOR H ₂ XB ₂	重量 WEIGHT (kg)	
			不锈钢 STAINLESS STEEL N	铝合金 ALUMINUM ALLOY L
1600x600 R100	1685x685 R142	1630x630 R115	64	44
1650x650 R100	1735x735 R142	1680x680 R115	70	48
1700x700 R100	1785x785 R142	1730x730 R115	78	52
1750x700 R100	1835x785 R142	1780x730 R115	80	54
1700x750 R100	1785x835 R142	1730x780 R115	83	56
1750x750 R100	1835x835 R142	1780x780 R115	85	59
1800x750 R100	1885x835 R142	1830x780 R115	87	62
1800x800 R100	1885x885 R142	1830x830 R115	92	66

标记示例

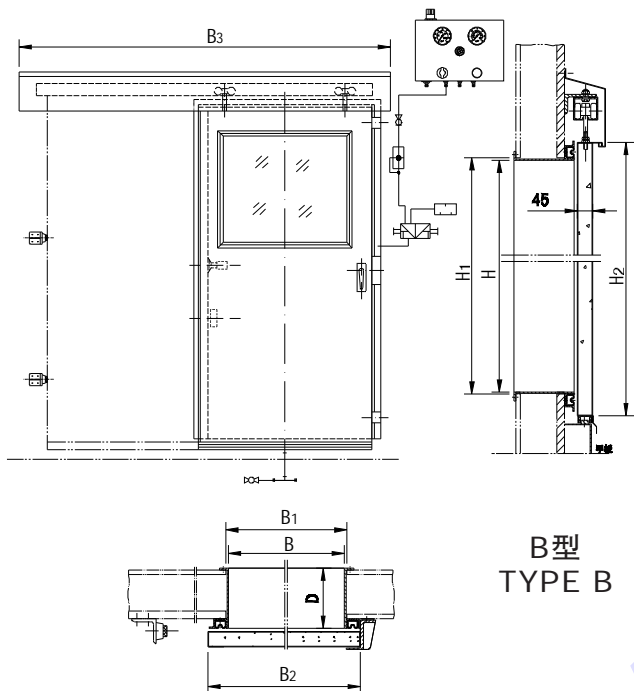
穿孔尺寸为1700x750mmA型侧开式充气密封条密封左开铝合金气密门：

气密门GASTIGHT DOOR

AL 1700 × 750L CB/T 3722-1995

气密门

GASTIGHT DOOR



B型
TYPE B

通孔尺寸 SIZE OF CLEAR OPENING H × B	围壁开口 SIZE OF WALL H1 × B1	外形尺寸 SIZE OF DOOR H2 × B2	滑轨长 SLIDE WAY LENGTH B3	门框深 DEPTH OF DOOR FRAME D	重量 WEIGHT kg	
					不锈钢 N	铝合金 L
1700 × 750 R100	1710 × 760 R105	1850 × 900	1950	100	151	111
					163	117
					176	123
1700 × 900 R100	1710 × 910 R105	1850 × 1050	2100	100	164	119
					176	125
					189	131
1800 × 750 R100	1810 × 760 R105	1950 × 900	1950	100	155	114
					167	120
					180	126
1800 × 900 R100	1810 × 910 R105	1950 × 1050	2100	100	168	122
					180	128
					193	134
1800 × 900 R100	1810 × 1010 R105	1950 × 1150	2200	100	177	128
					189	134
					202	140

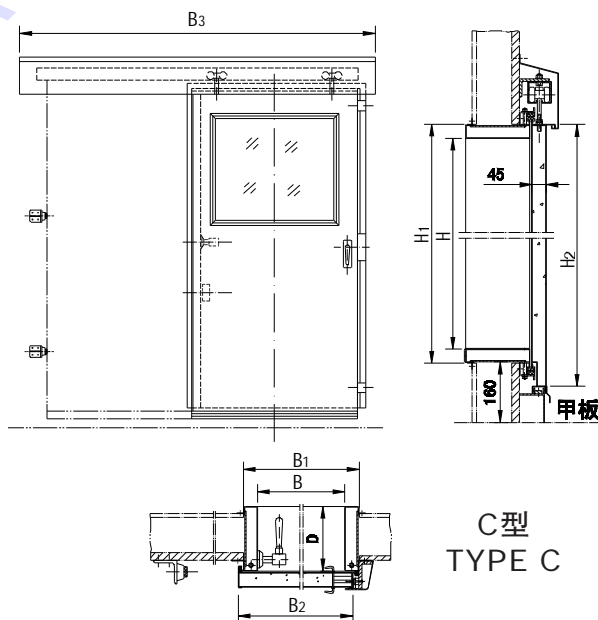
标记示例

通孔尺寸为1800 × 900mm，门框深200mm，B型滑移式充气密封条密封，左开不锈钢气密门：

气密门GASTIGHT DOOR

BL 1800 × 900 × 150L CB/T3722-1995

通孔尺寸 SIZE OF CLEAR OPENING H × B	围壁开口 SIZE OF WALL H1 × B1	外形尺寸 SIZE OF DOOR H2 × B2	滑轨长 SLIDE WAY LENGTH B3	门框深 DEPTH OF DOOR FRAME D	重量 WEIGHT kg	
					不锈钢 N	铝合金 L
1700 × 750 R100	1785 × 835 R105	1835 × 830	1950	100	153	113
					165	119
					178	125
1700 × 900 R100	1785 × 985 R105	1835 × 980	2100	100	166	121
					178	127
					191	133
1800 × 750 R100	1885 × 835 R105	1835 × 830	1950	100	157	116
					109	122
					182	128
1800 × 900 R100	1885 × 985 R105	1935 × 980	2100	100	170	124
					182	130
					195	136
1800 × 1000 R100	1885 × 1085 R105	1935 × 1080	2200	100	179	130
					191	136
					204	142



C型
TYPE C

标记示例

通孔尺寸为1700 × 750mm，门框深100mm，C型滑移式机械压夹密封，右开(R)不锈钢气密门：

气密门GASTIGHT DOOR

CR 1700 × 750 × 100R CB/T 3722-1995