

FITTINGS

NPS 1/2 through 60

- Schedule Standard (STD)
- Schedule **Extra-Strong (XS)**
- Schedule 40
- Schedule 80
- Schedule 160
- Schedule Double Extra-Strong (XXS)



FITTINGS

All Products Backed by the Hisea Marine Warranty

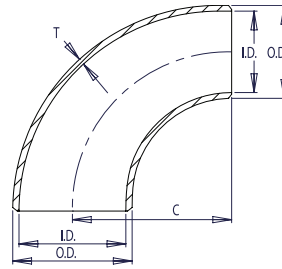
90° REDUCING ELBOWS



HI-SEA MARINE

SCHEDULE STD

For reference only



NOTES

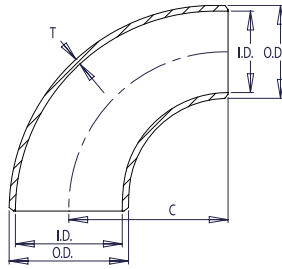
1. Conforms to ASME B16.9 & ASTM A234 WPB.
 2. All dimensions are in millimeters.
 3. For sizes larger than NPS 12 please call.
 4. All weights are in kilograms and approximated or estimated.
- * This size and thickness does not correspond to any pipe schedule number.

FITTINGS

Pipe Size	LARGE DIAMETER			SMALL DIAMETER			Center to End	Pipe Schedule Number	Approx. Weight in Kilograms
	Outside Diameter	Inside Diameter	Wall Thickness	Outside Diameter	Inside Diameter	Wall Thickness			
NPS	O.D.	I.D.	T	O.D.	I.D.	T	C		
2 x 1 1/2	60.3	52.48	3.91	48.3	40.94	3.68	76	40	0.64
2 x 1 1/4	60.3	52.48	3.91	42.2	35.08	3.56	76	40	0.59
2 x 1	60.3	52.48	3.91	33.4	26.64	3.38	76	40	0.54
2 1/2 x 2	73.0	62.68	5.16	60.3	52.48	3.91	95	40	1.27
2 1/2 x 1 1/2	73.0	62.68	5.16	48.3	40.94	3.68	95	40	1.18
2 1/2 x 1 1/4	73.0	62.68	5.16	42.2	35.08	3.56	95	40	1.13
3 x 2 1/2	88.9	77.92	5.49	73.0	62.68	5.16	114	40	1.91
3 x 2	88.9	77.92	5.49	60.3	52.48	3.91	114	40	1.63
3 x 1 1/2	88.9	77.92	5.49	48.3	40.94	3.68	114	40	1.50
3 1/2 x 3	101.6	90.12	5.74	88.9	77.92	5.49	133	40	2.72
3 1/2 x 2 1/2	101.6	90.12	5.74	73.0	62.68	5.16	133	40	2.49
3 1/2 x 2	101.6	90.12	5.74	60.3	52.48	3.91	133	40	2.04
4 x 3 1/2	114.3	102.26	6.02	101.6	90.12	5.74	152	40	3.81
4 x 3	114.3	102.26	6.02	88.9	77.92	5.49	152	40	3.49
4 x 2 1/2	114.3	102.26	6.02	73.0	62.68	5.16	152	40	3.08
4 x 2	114.3	102.26	6.02	60.3	52.48	3.91	152	40	2.72
5 x 4	141.3	128.20	6.55	114.3	102.26	6.02	190	40	6.08
5 x 3 1/2	141.3	128.20	6.55	101.6	90.12	5.74	190	40	5.72
5 x 3	141.3	128.20	6.55	88.9	77.92	5.49	190	40	5.35
5 x 2 1/2	141.3	128.20	6.55	73.0	62.68	5.16	190	40	4.85
6 x 5	168.3	154.08	7.11	141.3	128.20	6.55	229	40	9.53
6 x 4	168.3	154.08	7.11	114.3	102.26	6.02	229	40	8.57
6 x 3 1/2	168.3	154.08	7.11	101.6	90.12	5.74	229	40	8.07
6 x 3	168.3	154.08	7.11	88.9	77.92	5.49	229	40	7.62
8 x 6	219.1	202.74	8.18	168.3	154.08	7.11	305	40	18.01
8 x 5	219.1	202.74	8.18	141.3	128.20	6.55	305	40	16.42
8 x 4	219.1	202.74	8.18	114.3	102.26	6.02	305	40	15.01
10 x 8	273.0	254.46	9.27	219.1	202.74	8.18	381	40	33.11
10 x 6	273.0	254.46	9.27	168.3	154.08	7.11	381	40	28.67
10 x 5	273.0	254.46	9.27	141.3	128.20	6.55	381	40	26.54
12 x 10	323.8	304.74	9.53	273.0	254.46	9.27	457	*	51.26
12 x 8	323.8	304.74	9.53	219.1	202.74	8.18	457	*	44.63
12 x 6	323.8	304.74	9.53	168.3	154.08	7.11	457	*	39.24

NOTES

1. Conforms to ASME B16.9 & ASTM A234 WPB.
 2. All dimensions are in millimeters.
 3. For sizes larger than NPS 12 please call.
 4. All weights are in kilograms and approximated or estimated.
- * This size and thickness does not correspond to any pipe schedule number.



SCHEDULE XS
For reference only

Pipe Size	LARGE DIAMETER			SMALL DIAMETER			Center to End	Pipe Schedule Number	Approx. Weight in Kilograms
	Outside Diameter	Inside Diameter	Wall Thickness	Outside Diameter	Inside Diameter	Wall Thickness			
NPS	O.D.	I.D.	T	O.D.	I.D.	T	C		
2 x 1 1/2	60.3	49.22	5.54	48.3	38.14	5.08	76	80	0.86
2 x 1 1/4	60.3	49.22	5.54	42.2	32.50	4.85	76	80	0.82
2 x 1	60.3	49.22	5.54	33.4	24.30	4.55	76	80	0.77
2 1/2 x 2	73.0	58.98	7.01	60.3	49.22	5.54	95	80	1.54
2 1/2 x 1 1/2	73.0	58.98	7.01	48.3	38.14	5.08	95	80	1.36
2 1/2 x 1 1/4	73.0	58.98	7.01	42.2	32.50	4.85	95	80	1.32
3 x 2 1/2	88.9	73.66	7.62	73.0	58.98	7.01	114	80	2.59
3 x 2	88.9	73.66	7.62	60.3	49.22	5.54	114	80	2.22
3 x 1 1/2	88.9	73.66	7.62	48.3	38.14	5.08	114	80	2.04
3 1/2 x 3	101.6	85.44	8.08	88.9	73.66	7.62	133	80	3.72
3 1/2 x 2 1/2	101.6	85.44	8.08	73.0	58.98	7.01	133	80	3.31
3 1/2 x 2	101.6	85.44	8.08	60.3	49.22	5.54	133	80	2.90
4 x 3 1/2	114.3	97.18	8.56	48.3	38.14	5.08	152	80	5.17
4 x 3	114.3	97.18	8.56	88.9	73.66	7.62	152	80	4.76
4 x 2 1/2	114.3	97.18	8.56	73.0	58.98	7.01	152	80	4.26
4 x 2	114.3	97.18	8.56	60.3	49.22	5.54	152	80	3.81
5 x 4	141.3	122.24	9.53	114.3	97.18	8.56	190	80	8.53
5 x 3 1/2	141.3	122.24	9.53	101.6	85.44	8.08	190	80	7.89
5 x 3	141.3	122.24	9.53	88.9	73.66	7.62	190	80	7.48
5 x 2 1/2	141.3	122.24	9.53	73.0	58.98	7.01	190	80	6.85
6 x 5	168.3	146.36	10.97	141.3	122.24	9.53	229	80	14.24
6 x 4	168.3	146.36	10.97	114.3	97.18	8.56	229	80	12.66
6 x 3 1/2	168.3	146.36	10.97	101.6	85.44	8.08	229	80	11.93
6 x 3	168.3	146.36	10.97	88.9	73.66	7.62	229	80	11.29
8 x 6	219.1	193.70	12.70	168.3	146.36	10.97	305	80	27.58
8 x 5	219.1	193.70	12.70	141.3	122.24	9.53	305	80	24.63
8 x 4	219.1	193.70	12.70	114.3	97.18	8.56	305	80	22.45
10 x 8	273.0	247.60	12.70	219.1	193.70	12.70	381	*	46.27
10 x 6	273.0	247.60	12.70	168.3	146.36	10.97	381	*	39.24
10 x 5	273.0	247.60	12.70	141.3	122.24	9.53	381	*	35.61
12 x 10	323.8	298.40	12.70	273.0	247.60	12.70	457	*	67.13
12 x 8	323.8	298.40	12.70	219.1	193.70	12.70	457	*	59.87
12 x 6	323.8	298.40	12.70	168.3	146.36	10.97	457	*	51.71

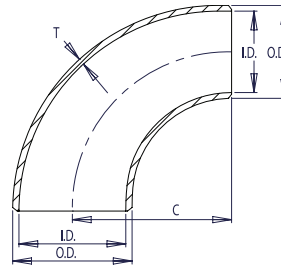
90° REDUCING ELBOWS



HI-SEA MARINE

SCHEDULE 40

For reference only



NOTES

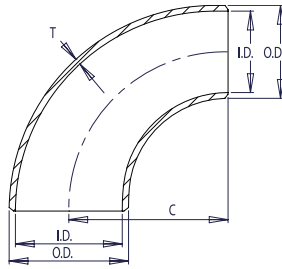
1. Conforms to ASME B16.9 & ASTM A234 WPB.
2. All dimensions are in millimeters.
3. For sizes larger than NPS 12 please call.
4. All weights are in kilograms and approximated or estimated.

FITTINGS

Pipe Size NPS	LARGE DIAMETER			SMALL DIAMETER			Center to End C	Pipe Schedule Number	Approx. Weight in Kilograms
	Outside Diameter O.D.	Inside Diameter I.D.	Wall Thickness T	Outside Diameter O.D.	Inside Diameter I.D.	Wall Thickness T			
2 x 1 1/2	60.3	52.48	3.91	48.3	40.94	3.68	76	40	0.64
2 x 1 1/4	60.3	52.48	3.91	42.2	35.08	3.56	76	40	0.59
2 x 1	60.3	52.48	3.91	33.4	26.64	3.38	76	40	0.54
2 1/2 x 2	73.0	62.68	5.16	60.3	52.48	3.91	95	40	1.27
2 1/2 x 1 1/2	73.0	62.68	5.16	48.3	40.94	3.68	95	40	1.18
2 1/2 x 1 1/4	73.0	62.68	5.16	42.2	35.08	3.56	95	40	1.13
3 x 2 1/2	88.9	77.92	5.49	73.0	62.68	5.16	114	40	1.91
3 x 2	88.9	77.92	5.49	60.3	52.48	3.91	114	40	1.63
3 x 1 1/2	88.9	77.92	5.49	48.3	40.94	3.68	114	40	1.50
3 1/2 x 3	101.6	90.12	5.74	88.9	77.92	5.49	133	40	2.72
3 1/2 x 2 1/2	101.6	90.12	5.74	73.0	62.68	5.16	133	40	2.49
3 1/2 x 2	101.6	90.12	5.74	60.3	52.48	3.91	133	40	2.04
4 x 3 1/2	114.3	102.26	6.02	101.6	90.12	5.74	152	40	3.81
4 x 3	114.3	102.26	6.02	88.9	77.92	5.49	152	40	3.49
4 x 2 1/2	114.3	102.26	6.02	73.0	62.68	5.16	152	40	3.08
4 x 2	114.3	102.26	6.02	60.3	52.48	3.91	152	40	2.72
5 x 4	141.3	128.20	6.55	114.3	102.26	6.02	190	40	6.08
5 x 3 1/2	141.3	128.20	6.55	101.6	90.12	5.74	190	40	5.72
5 x 3	141.3	128.20	6.55	88.9	77.92	5.49	190	40	5.35
5 x 2 1/2	141.3	128.20	6.55	73.0	62.68	5.16	190	40	4.85
6 x 5	168.3	154.08	7.11	141.3	128.20	6.55	229	40	9.53
6 x 4	168.3	154.08	7.11	114.3	102.26	6.02	229	40	8.57
6 x 3 1/2	168.3	154.08	7.11	101.6	90.12	5.74	229	40	8.07
6 x 3	168.3	154.08	7.11	88.9	77.92	5.49	229	40	7.62
8 x 6	219.1	202.74	8.18	168.3	154.08	7.11	305	40	18.01
8 x 5	219.1	202.74	8.18	141.3	128.20	6.55	305	40	16.42
8 x 4	219.1	202.74	8.18	114.3	102.26	6.02	305	40	15.01
10 x 8	273.0	254.46	9.27	219.1	202.74	8.18	381	40	33.11
10 x 6	273.0	254.46	9.27	168.3	154.08	7.11	381	40	28.67
10 x 5	273.0	254.46	9.27	141.3	128.20	6.55	381	40	26.54
12 x 10	323.8	303.18	10.31	273.0	254.46	9.27	457	40	52.16
12 x 8	323.8	303.18	10.31	219.1	202.74	8.18	457	40	45.36
12 x 6	323.8	303.18	10.31	168.3	154.08	7.11	457	40	40.82

NOTES

1. Conforms to ASME B16.9 & ASTM A234 WPB.
2. All dimensions are in millimeters.
3. For sizes larger than NPS 12 please call.
4. All weights are in kilograms and approximated or estimated.



SCHEDULE 80
For reference only

Pipe Size	LARGE DIAMETER			SMALL DIAMETER			Center to End	Pipe Schedule Number	Approx. Weight in Kilograms
	Outside Diameter	Inside Diameter	Wall Thickness	Outside Diameter	Inside Diameter	Wall Thickness			
NPS	O.D.	I.D.	T	O.D.	I.D.	T	C		
2 x 1 1/2	60.3	49.22	5.54	48.3	38.14	5.08	76	80	0.86
2 x 1 1/4	60.3	49.22	5.54	42.2	32.50	4.85	76	80	0.82
2 x 1	60.3	49.22	5.54	33.4	24.30	4.55	76	80	0.77
2 1/2 x 2	73.0	58.98	7.01	60.3	49.22	5.54	95	80	1.54
2 1/2 x 1 1/2	73.0	58.98	7.01	48.3	38.14	5.08	95	80	1.36
2 1/2 x 1 1/4	73.0	58.98	7.01	42.2	32.50	4.85	95	80	1.32
3 x 2 1/2	88.9	73.66	7.62	73.0	58.98	7.01	114	80	2.59
3 x 2	88.9	73.66	7.62	60.3	49.22	5.54	114	80	2.22
3 x 1 1/2	88.9	73.66	7.62	48.3	38.14	5.08	114	80	2.04
3 1/2 x 3	101.6	85.44	8.08	88.9	73.66	7.62	133	80	3.72
3 1/2 x 2 1/2	101.6	85.44	8.08	73.0	58.98	7.01	133	80	3.31
3 1/2 x 2	101.6	85.44	8.08	60.3	49.22	5.54	133	80	2.90
4 x 3 1/2	114.3	97.18	8.56	48.3	38.14	5.08	152	80	5.17
4 x 3	114.3	97.18	8.56	88.9	73.66	7.62	152	80	4.76
4 x 2 1/2	114.3	97.18	8.56	73.0	58.98	7.01	152	80	4.26
4 x 2	114.3	97.18	8.56	60.3	49.22	5.54	152	80	3.81
5 x 4	141.3	122.24	9.53	114.3	97.18	8.56	190	80	8.53
5 x 3 1/2	141.3	122.24	9.53	101.6	85.44	8.08	190	80	7.89
5 x 3	141.3	122.24	9.53	88.9	73.66	7.62	190	80	7.48
5 x 2 1/2	141.3	122.24	9.53	73.0	58.98	7.01	190	80	6.85
6 x 5	168.3	146.36	10.97	141.3	122.24	9.53	229	80	14.24
6 x 4	168.3	146.36	10.97	114.3	97.18	8.56	229	80	12.66
6 x 3 1/2	168.3	146.36	10.97	101.6	85.44	8.08	229	80	11.93
6 x 3	168.3	146.36	10.97	88.9	73.66	7.62	229	80	11.29
8 x 6	219.1	193.70	12.70	168.3	146.36	10.97	305	80	27.58
8 x 5	219.1	193.70	12.70	141.3	122.24	9.53	305	80	24.63
8 x 4	219.1	193.70	12.70	114.3	97.18	8.56	305	80	22.45
10 x 8	273.0	242.82	15.09	219.1	193.70	12.70	381	80	47.63
10 x 6	273.0	242.82	15.09	168.3	146.36	10.97	381	80	40.82
10 x 5	273.0	242.82	15.09	141.3	122.24	9.53	381	80	36.29
12 x 10	323.8	288.84	17.48	273.0	242.82	15.09	457	80	70.31
12 x 8	323.8	288.84	17.48	219.1	193.70	12.70	457	80	61.23
12 x 6	323.8	288.84	17.48	168.3	146.36	10.97	457	80	54.43