

FITTINGS

NPS ½ through 60

- Schedule Standard (STD)
- Schedule Extra-Strong (XS)
- Schedule 40
- Schedule 80
- Schedule 160
- Schedule Double Extra-Strong (XXS)

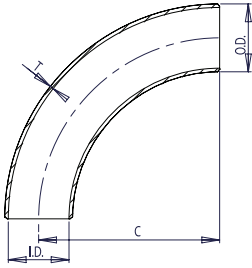


FITTINGS

All Products Backed by the Hisea Marine Warranty

90° ELBOWS

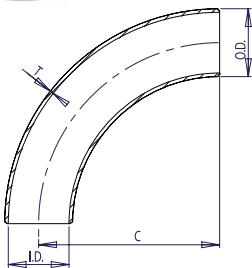
3R SCHEDULE STD


NOTES

1. Conforms to ASME B16.9 & ASTM A234 WPB.
 2. All dimensions are in millimeters.
 3. For sizes larger than NPS 24 please call.
 4. All weights are in kilograms and approximated or estimated.
- * This size and thickness does not correspond to any pipe schedule number.

Pipe Size	Outside Diameter	Inside Diameter	Wall Thickness	Center to End	Pipe Schedule Number	Approx. Weight in Kilograms
NPS	O.D.	I.D.	T	C		
¾	26.7	20.96	2.87	57	40	0.14
1	33.4	26.64	3.38	76	40	0.36
1 ¼	42.2	35.08	3.56	95	40	0.50
1 ½	48.3	40.94	3.68	114	40	0.73
2	60.3	52.48	3.91	152	40	1.45
2 ½	73.0	62.68	5.16	190	40	2.90
3	88.9	77.92	5.49	229	40	4.35
3 ½	101.6	90.12	5.74	267	40	6.80
4	114.3	102.26	6.02	305	40	8.07
5	141.3	128.20	6.55	381	40	13.61
6	168.3	154.08	7.11	457	40	21.77
8	219.1	202.74	8.18	610	40	43.09
10	273.0	254.46	9.27	762	40	75.75
12	323.8	304.74	9.53	914	*	113.40
14	355.6	336.54	9.53	1067	30	140.61
16	406.4	387.34	9.53	1219	30	188.24
18	457.0	437.94	9.53	1372	*	240.40
20	508.0	488.94	9.53	1524	20	294.83
24	610.0	590.94	9.53	1829	20	424.11

3R SCHEDULE XS

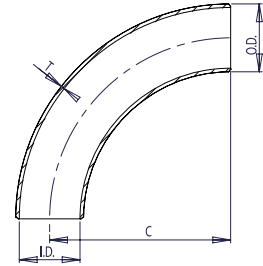

NOTES

1. Conforms to ASME B16.9 & ASTM A234 WPB.
 2. All dimensions are in millimeters.
 3. For sizes larger than NPS 24 please call.
 4. All weights are in kilograms and approximated or estimated.
- * This size and thickness does not correspond to any pipe schedule number.

Pipe Size	Outside Diameter	Inside Diameter	Wall Thickness	Center to End	Pipe Schedule Number	Approx. Weight in Kilograms
NPS	O.D.	I.D.	T	C		
¾	26.7	18.88	3.91	57	80	0.14
1	33.4	24.30	4.55	76	80	0.72
1 ¼	42.2	32.50	4.85	95	80	1.09
1 ½	48.3	38.14	5.08	114	80	1.91
2	60.3	49.22	5.54	152	80	3.45
2 ½	73.0	58.98	7.01	190	80	5.72
3	88.9	73.66	7.62	229	80	7.80
3 ½	101.6	85.44	8.08	267	80	9.98
4	114.3	97.18	8.56	305	80	11.34
5	141.3	122.24	9.53	381	80	20.41
6	168.3	146.36	10.97	457	80	31.75
8	219.1	193.70	12.70	610	80	65.77
10	273.0	247.60	12.70	762	60	102.06
12	323.8	298.40	12.70	914	*	145.15
14	355.6	330.20	12.70	1067	*	183.70
16	406.4	381.00	12.70	1219	40	244.94
18	457.0	431.60	12.70	1372	*	317.51
20	508.0	482.60	12.70	1524	30	383.28
24	610.0	584.60	12.70	1829	*	548.84

Pipe Size	Outside Diameter	Inside Diameter	Wall Thickness	Center to End	Pipe Schedule Number	Approx. Weight in Kilograms
NPS	O.D.	I.D.	T	C		
¾	26.7	20.96	2.87	57	40	0.14
1	33.4	26.64	3.38	76	40	0.36
1 ¼	42.2	35.08	3.56	95	40	0.50
1 ½	48.3	40.94	3.68	114	40	0.73
2	60.3	52.48	3.91	152	40	1.45
2 ½	73.0	62.68	5.16	190	40	2.90
3	88.9	77.92	5.49	229	40	4.35
3 ½	101.6	90.12	5.74	267	40	6.80
4	114.3	102.26	6.02	305	40	8.07
5	141.3	128.20	6.55	381	40	13.61
6	168.3	154.08	7.11	457	40	21.77
8	219.1	202.74	8.18	610	40	43.09
10	273.0	254.46	9.27	762	40	75.75
12	323.8	303.18	10.31	914	40	92.99
14	355.6	333.34	11.13	1067	40	138.34
16	406.4	381.00	12.70	1219	40	244.94
18	457.0	428.46	14.27	1372	40	335.66
20	508.0	477.82	15.09	1524	40	430.91
24	610.0	575.04	17.48	1829	40	635.03

3R SCHEDULE 40

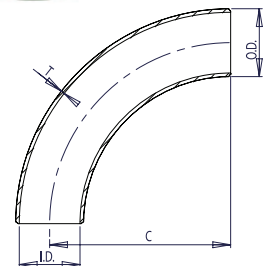


NOTES

1. Conforms to ASME B16.9 & ASTM A234 WPB.
2. All dimensions are in millimeters.
3. For sizes larger than NPS 24 please call.
4. All weights are in kilograms and approximated or estimated.

Pipe Size	Outside Diameter	Inside Diameter	Wall Thickness	Center to End	Pipe Schedule Number	Approx. Weight in Kilograms
NPS	O.D.	I.D.	T	C		
¾	26.7	18.88	3.91	57	80	0.14
1	33.4	24.30	4.55	76	80	0.72
1 ¼	42.2	32.50	4.85	95	80	1.09
1 ½	48.3	38.14	5.08	114	80	1.91
2	60.3	49.22	5.54	152	80	3.45
2 ½	73.0	58.98	7.01	190	80	5.72
3	88.9	73.66	7.62	229	80	7.80
3 ½	101.6	85.44	8.08	267	80	9.98
4	114.3	97.18	8.56	305	80	11.34
5	141.3	122.24	9.53	381	80	20.41
6	168.3	146.36	10.97	457	80	31.75
8	219.1	193.70	12.70	610	80	65.77
10	273.0	242.82	15.09	762	80	90.72
12	323.8	288.84	17.48	914	80	145.15
14	355.6	317.50	19.05	1067	80	272.15
16	406.4	363.52	21.44	1219	80	367.41
18	457.0	409.34	23.83	1372	80	462.66
20	508.0	455.62	26.19	1524	80	635.03
24	610.0	548.08	30.96	1829	80	816.46

3R SCHEDULE 80



NOTES

1. Conforms to ASME B16.9 & ASTM A234 WPB.
2. All dimensions are in millimeters.
3. All weights are in kilograms and approximated or estimated.