

FITTINGS

NPS ½ through 60

- Schedule Standard (STD)
- Schedule **Extra-Strong (XS)**
- Schedule 40
- Schedule 80
- Schedule 160
- Schedule Double Extra-Strong (XXS)

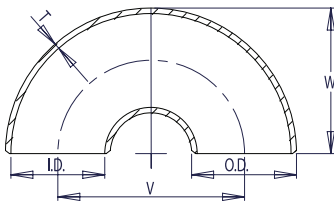


FITTINGS

All Products Backed by the Hisea Marine Warranty

180° RETURN BENDS

SHORT RADIUS SCHEDULE STD



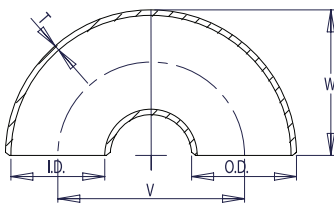
NOTES

1. Conforms to ASME B16.9 & ASTM A234 WPB.
 2. All dimensions are in millimeters.
 3. For sizes larger than NPS 24 please call.
 4. All weights are in kilograms and approximated or estimated.
- * This size and thickness does not correspond to any pipe schedule number.

Pipe Size	Outside Diameter	Inside Diameter	Wall Thickness	Center to Center	Back to Face	Pipe Schedule Number	Approx. Weight in Kilograms
NPS	O.D.	I.D.	T	V	W		
1	33.4	26.64	3.38	51	41	40	0.23
1 ¼	42.2	35.08	3.56	64	52	40	0.36
1 ½	48.3	40.94	3.68	76	62	40	0.50
2	60.3	52.48	3.91	102	81	40	0.86
2 ½	73.0	62.68	5.16	127	100	40	1.81
3	88.9	77.92	5.49	152	121	40	2.72
3 ½	101.6	90.12	5.74	178	140	40	3.95
4	114.3	102.26	6.02	203	159	40	5.53
5	141.3	128.20	6.55	254	197	40	8.71
6	168.3	154.08	7.11	305	237	40	14.92
8	219.1	202.74	8.18	406	313	40	29.44
10	273.0	254.46	9.27	508	391	40	50.80
12	323.8	304.74	9.53	610	467	*	71.21
14	355.6	336.54	9.53	711	533	30	94.35
16	406.4	387.34	9.53	813	610	30	116.57
18	457.0	437.94	9.53	914	686	*	147.42
20	508.0	488.94	9.53	1016	762	20	188.69
24	610.0	590.94	9.53	1219	914	20	268.53

FITTINGS

SHORT RADIUS SCHEDULE XS



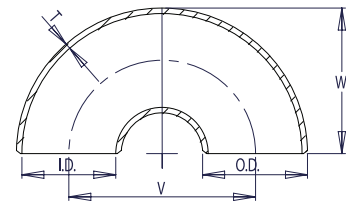
NOTES

1. Conforms to ASME B16.9 & ASTM A234 WPB.
 2. All dimensions are in millimeters.
 3. For sizes larger than NPS 24 please call.
 4. All weights are in kilograms and approximated or estimated.
- * This size and thickness does not correspond to any pipe schedule number.

Pipe Size	Outside Diameter	Inside Diameter	Wall Thickness	Center to Center	Back to Face	Pipe Schedule Number	Approx. Weight in Kilograms
NPS	O.D.	I.D.	T	V	W		
1	33.4	24.30	4.55	51	41	80	0.32
1 ¼	42.2	32.50	4.85	64	52	80	0.45
1 ½	48.3	38.14	5.08	76	62	80	0.68
2	60.3	49.22	5.54	102	81	80	1.32
2 ½	73.0	58.98	7.01	127	100	80	2.36
3	88.9	73.66	7.62	152	121	80	3.72
3 ½	101.6	85.44	8.08	178	140	80	5.31
4	114.3	97.18	8.56	203	159	80	7.44
5	141.3	122.24	9.53	254	197	80	12.56
6	168.3	146.36	10.97	305	237	80	20.73
8	219.1	193.70	12.70	406	313	80	43.68
10	273.0	247.60	12.70	508	391	60	64.86
12	323.8	298.40	12.70	610	467	*	96.16
14	355.6	330.20	12.70	711	533	*	122.92
16	406.4	381.00	12.70	813	610	40	153.77
18	457.0	431.60	12.70	914	686	*	192.78
20	508.0	482.60	12.70	1016	762	30	251.74
24	610.0	584.60	12.70	1219	914	*	352.89

Pipe Size	Outside Diameter	Inside Diameter	Wall Thickness	Center to Center	Back to Face	Pipe Schedule Number	Approx. Weight in Kilograms
NPS	O.D.	I.D.	T	V	W		
1	33.4	26.64	3.38	51	41	40	0.23
1 ¼	42.2	35.08	3.56	64	52	40	0.36
1 ½	48.3	40.94	3.68	76	62	40	0.50
2	60.3	52.48	3.91	102	81	40	0.86
2 ½	73.0	62.68	5.16	127	100	40	1.81
3	88.9	77.92	5.49	152	121	40	2.72
3 ½	101.6	90.12	5.74	178	140	40	3.95
4	114.3	102.26	6.02	203	159	40	5.53
5	141.3	128.20	6.55	254	197	40	8.71
6	168.3	154.08	7.11	305	237	40	14.92
8	219.1	202.74	8.18	406	313	40	29.44
10	273.0	254.46	9.27	508	391	40	50.80
12	323.8	303.18	10.31	610	467	40	74.84
14	355.6	333.34	11.13	711	533	40	97.52
16	406.4	381.00	12.70	813	610	40	120.20
18	457.0	428.46	14.27	914	686	40	151.95
20	508.0	477.82	15.09	1016	762	40	192.78
24	610.0	575.04	17.48	1219	914	40	274.42

SHORT RADIUS SCHEDULE 40



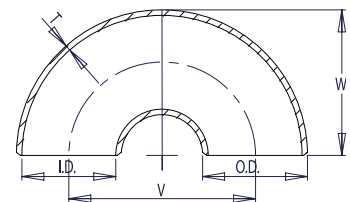
NOTES

1. Conforms to ASME B16.9 & ASTM A234 WPB.
2. All dimensions are in millimeters.
3. For sizes larger than NPS 24 please call.
4. All weights are in kilograms and approximated or estimated.

FITTINGS

Pipe Size	Outside Diameter	Inside Diameter	Wall Thickness	Center to Center	Back to Face	Pipe Schedule Number	Approx. Weight in Kilograms
NPS	O.D.	I.D.	T	V	W		
1	33.4	24.30	4.55	51	41	80	0.32
1 ¼	42.2	32.50	4.85	64	52	80	0.45
1 ½	48.3	38.14	5.08	76	62	80	0.68
2	60.3	49.22	5.54	102	81	80	1.32
2 ½	73.0	58.98	7.01	127	100	80	2.36
3	88.9	73.66	7.62	152	121	80	3.72
3 ½	101.6	85.44	8.08	178	140	80	5.31
4	114.3	97.18	8.56	203	159	80	7.44
5	141.3	122.24	9.53	254	197	80	12.56
6	168.3	146.36	10.97	305	237	80	20.73
8	219.1	193.70	12.70	406	313	80	43.68
10	273.0	242.82	15.09	508	391	80	72.57
12	323.8	288.84	17.48	610	467	80	102.06
14	355.6	317.50	19.05	711	533	80	127.01
16	406.4	363.52	21.44	813	610	80	158.76
18	457.0	409.34	23.83	914	686	80	197.31
20	508.0	455.62	26.19	1016	762	80	258.55
24	610.0	548.08	30.96	1219	914	80	358.34

SHORT RADIUS SCHEDULE 80

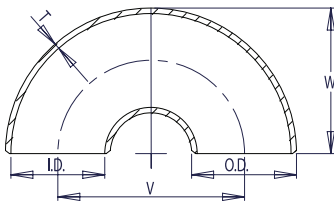


NOTES

1. Conforms to ASME B16.9 & ASTM A234 WPB.
2. All dimensions are in millimeters.
3. All weights are in kilograms and approximated or estimated.

180° RETURN BENDS

SHORT RADIUS SCHEDULE 160



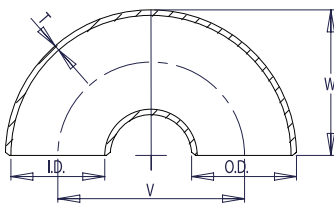
NOTES

1. Conforms to ASME B16.9 & ASTM A234 WPB.
2. All dimensions are in millimeters.
3. All weights are in kilograms and approximated or estimated.

Pipe Size	Outside Diameter	Inside Diameter	Wall Thickness	Center to Center	Back to Face	Pipe Schedule Number	Approx. Weight in Kilograms
NPS	O.D.	I.D.	T	V	W		
1	33.4	20.70	6.35	51	41	160	0.39
1 ¼	42.2	29.50	6.35	64	52	160	0.55
1 ½	48.3	34.02	7.14	76	62	160	0.83
2	60.3	42.82	8.74	102	81	160	1.59
2 ½	73.0	53.94	9.53	127	100	160	2.85
3	88.9	66.64	11.13	152	121	160	4.50
4	114.3	87.32	13.49	203	159	160	9.00
5	141.3	109.54	15.88	254	197	160	15.20
6	168.3	131.78	18.26	305	237	160	25.08
8	219.1	173.08	23.01	406	313	160	52.85
10	273.0	215.84	28.58	508	391	160	78.48
12	323.8	257.16	33.32	610	467	160	116.35
14	355.6	284.18	35.71	711	533	160	148.74
16	406.4	325.42	40.49	813	610	160	186.06
18	457.0	366.52	45.24	914	686	160	233.26
20	508.0	407.98	50.01	1016	762	160	304.61
24	610.0	490.92	59.54	1219	914	160	427.00

FITTINGS

SHORT RADIUS SCHEDULE XXS



NOTES

1. Conforms to ASME B16.9 & ASTM A234 WPB.
2. All dimensions are in millimeters.
3. All weights are in kilograms and approximated or estimated.

* This size and thickness does not correspond to any pipe schedule number.

Pipe Size	Outside Diameter	Inside Diameter	Wall Thickness	Center to Center	Back to Face	Pipe Schedule Number	Approx. Weight in Kilograms
NPS	O.D.	I.D.	T	V	W		
1	33.4	15.22	9.09	51	41	*	0.42
1 ¼	42.2	22.80	9.70	64	52	*	0.60
1 ½	48.3	28.00	10.15	76	62	*	0.91
2	60.3	38.16	11.07	102	81	*	1.77
2 ½	73.0	44.96	14.02	127	100	*	3.14
3	88.9	58.42	15.24	152	121	*	4.95
4	114.3	80.06	17.12	203	159	*	9.90
5	141.3	103.20	19.05	254	197	*	16.72
6	168.3	124.40	21.95	305	237	*	27.59
8	219.1	174.64	22.23	406	313	*	58.14
10	273.0	222.20	25.40	508	391	140	86.33
12	323.8	273.00	25.40	610	467	120	127.99