

BS4504 PN10 Flanges

Weld neck flange

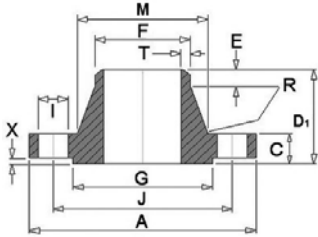
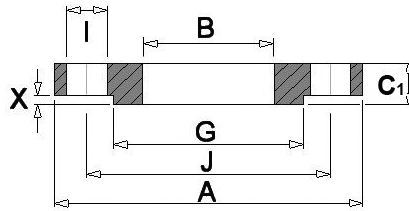
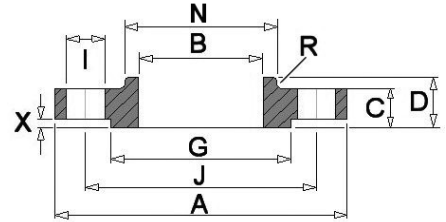


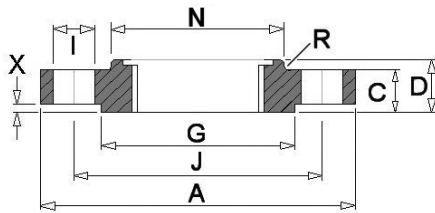
Plate flange



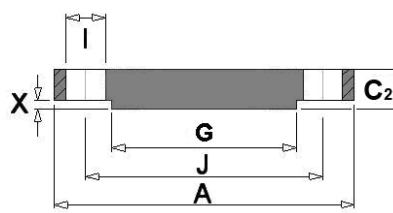
Slip-on flange



Socket welding flange



Blind flange



Dimensions in mm

Nom. Size	Flange						Raised Face	Boss	Drilling	Bolting	Neck							Bore Diameter	
	DN	A	C	C1	C2	D					D1	G	X	No.	I	J	M		F
10	90	14	14	14	20	35	40	2	30	4	14	60	M12	28	17.2	6	3	1.8	18.0
15	95	14	14	14	20	35	45	2	35	4	14	65	M12	32	21.3	6	3	2.0	22.0
20	105	16	16	16	24	38	58	2	45	4	14	75	M12	39	26.9	6	4	2.3	27.5
25	115	16	16	16	24	38	68	2	52	4	14	85	M12	46	33.7	6	4	2.6	34.5
32	140	16	18	16	26	40	78	2	60	4	18	100	M16	56	42.4	6	5	2.6	43.5
40	150	16	18	16	26	42	88	3	70	4	18	110	M16	64	48.3	7	5	2.6	49.5
50	165	18	20	18	28	45	102	3	84	4	18	125	M16	74	60.3	8	5	2.9	61.5
65	185	18	20	18	32	45	122	3	104	4 / 8	18	145	M16	92	76.1	10	6	2.9	77.5
80	200	20	20	20	34	50	138	3	118	8	18	160	M16	110	88.9	10	6	3.2	90.5
100	220	20	22	20	40	52	162	3	140	8	18	180	M16	130	114.3	12	6	3.6	116.0
125 *	250	22	22	22	44	55	188	3	168	8	18	210	M16	158	139.7	12	6	4.0	141.5
150	285	22	24	22	44	55	212	3	195	8	22	240	M20	184	168.3	12	8	4.5	170.5
200	340	24	24	24	44	62	268	3	246	8	22	295	M20	234	219.1	16	8	5.6	221.5
250	395	26	26	26	46	68	320	3	298	12	22	350	M20	288	273.0	16	10	6.3	276.5
300	445	26	28	26	46	68	370	4	350	12	22	400	M20	342	323.9	16	10	7.1	327.6
350	505	26	28	26	53	68	430	4	400	16	22	460	M20	390	355.6	16	10	7.1	359.0
400	565	26	32	26	57	72	482	4	456	16	26	515	M24	440	406.4	16	10	7.1	411.0
450	615	28	36	28	63	72	532	4	502	20	26	565	M24	488	457.0	16	12	7.1	462.0
500	670	28	38	28	67	75	585	4	559	20	26	620	M24	540	508.0	16	12	7.1	513.5
600	780	28	42	34	75	80	685	5	658	20	30	725	M27	640	610.0	18	12	7.1	616.5
700	895	30	-	38	-	80	800	5	-	24	30	840	M27	746	711.0	18	12	8.0	-
800	1015	32	-	42	-	90	905	5	-	24	33	950	M30	848	813.0	18	12	8.0	-
900	1115	34	-	46	-	95	1005	5	-	28	33	1050	M30	948	914.0	20	12	10.0	-
1000	1230	34	-	52	-	95	1110	5	-	28	36	1160	M33	1050	1016.0	20	12	10.0	-
1200	1455	38	-	60	-	115	1330	5	-	32	39	1380	M36	1256	1220.0	25	12	11.0	-
1400	1675	42	-	-	-	120	1535	5	-	36	42	1590	M39	1460	1420.0	25	12	12.0	-
1600	1915	46	-	-	-	130	1760	5	-	40	48	1820	M45	1666	1620.0	25	12	14.0	-
1800	2115	50	-	-	-	140	1960	5	-	44	48	2020	M45	1866	1820.0	30	15	15.0	-
2000	2325	54	-	-	-	150	2170	5	-	48	48	2230	M45	2070	2020.0	30	15	16.0	-
2200	2550	58	-	-	-	160	2370	6	-	52	56	2440	M52	2275	2220.0	35	15	-	-
2400	2760	62	-	-	-	170	2570	6	-	56	56	2650	M52	2478	2420.0	35	15	-	-
2600	2960	65	-	-	-	180	2780	6	-	60	56	2850	M52	2680	2620.0	40	18	-	-
2800	3180	70	-	-	-	190	3000	6	-	64	56	3070	M52	2882	2820.0	40	18	-	-
3000	3405	75	-	-	-	200	3210	6	-	68	62	3290	M56	3085	3020.0	40	18	-	-

1. Weld neck flanges are bored to suit schedule of pipework used.
2. Blind flanges are supplied flat faced unless otherwise requested by the purchaser.
3. For information sizes DN10 to DN150 use PN16 dimensions.