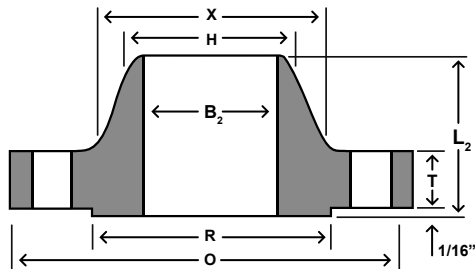
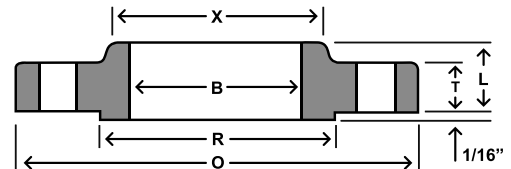


# Class 250 (300psi\*)



WELD NECK



SLIP-ON

Nom. Size					Bore		LTH		Drilling				Weights		
	OD	Thickness	OD of RF	Dia at Base	WN	SO	Weld Neck	SO	Bolt Circle	Bolt Length	Hole Dia	# Holes	Weld Neck	Slip-on	Blind
	O	T	R	X	B <sub>2</sub>	B	L <sub>2</sub>	L							
26	38.25	2.81	32.44	30.50		26.25	5.81	4.75	34.50	10.00	1.88	28	534	531	916
28	40.75	2.94	34.94	33.00		28.25	5.94	5.00	37.00	10.25	1.88	28	629	637	1095
30	43.00	3.00	37.19	35.25	To be specified by Purchaser.	30.25	6.00	5.00	39.25	10.50	1.88	28	702	707	1236
32	45.25	3.12	39.44	37.50		32.25	6.12	5.12	41.50	10.75	1.88	28	793	801	1424
34	47.50	3.25	41.44	39.50		34.25	6.25	5.25	43.50	11.25	1.88	28	882	889	1649
36	50.00	3.38	43.69	41.50		36.25	6.38	5.38	46.00	12.00	2.13	32	969	970	1884
38	52.25	3.44	45.69	43.50		38.25	6.44	5.50	48.00	12.00	2.13	32	1057	1062	2094
40	54.25	3.56	47.94	45.75		40.25	6.56	5.50	50.25	12.25	2.13	36	1158	1172	2336
42	57.00	3.69	50.44	47.75		42.25	6.94	5.62	52.75	12.50	2.125	36	1318	1288	2673
44	59.25	3.75	52.69	49.75		44.25	7.00	5.75	55.00	12.75	2.13	36	1423	1397	2935
46	61.50	3.88	54.94	51.75		46.25	7.12	5.88	57.25	13.00	2.13	40	1536	1510	3272
48	65.00	4.00	58.44	54.00		48.25	7.25	6.00	60.75	13.25	2.13	40	1824	1797	3768

DIMENSIONS ARE IN INCHES / WEIGHTS ARE IN POUNDS

NOTES: \*AWWA PRESSURE RATING AT ATMOSPHERIC TEMPERATURE IS 300 PSI. THESE FLANGES HAVE THE SAME OD AND DRILLING AS ANSI/ASME B16.1 CLASS 250 CAST IRON FLANGED