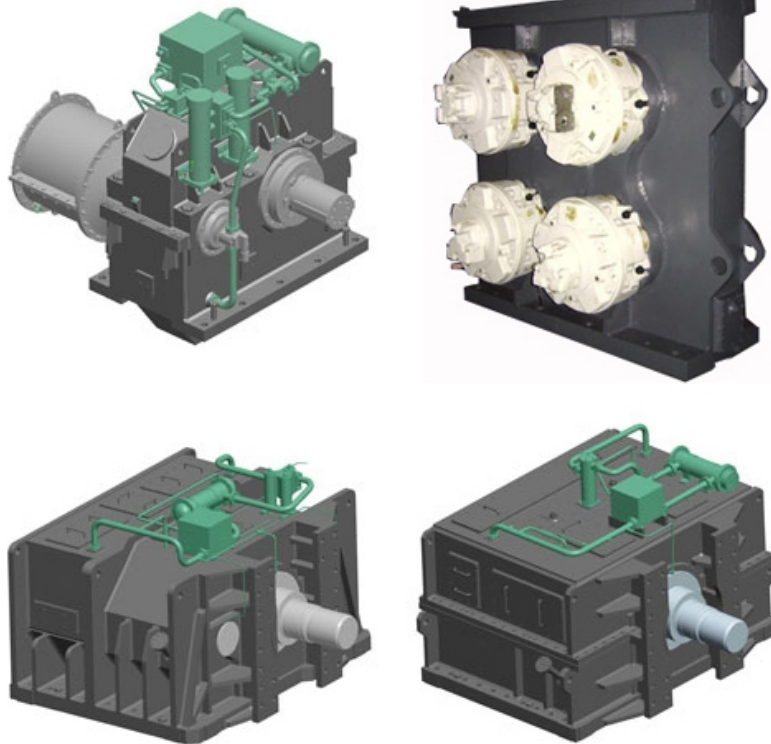
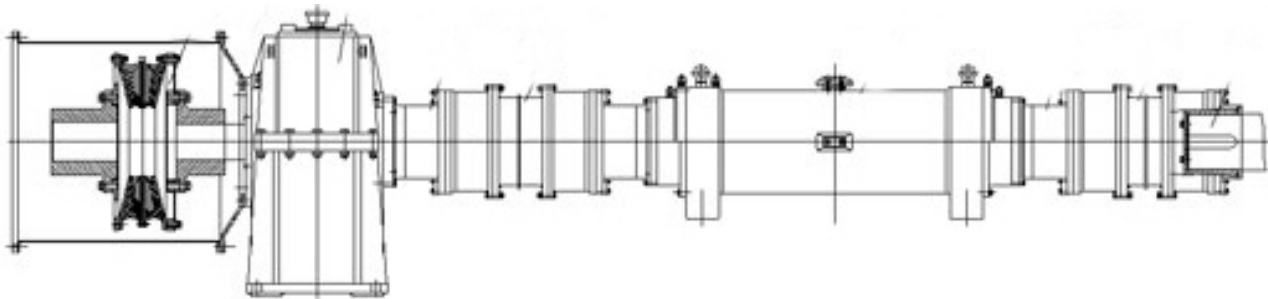


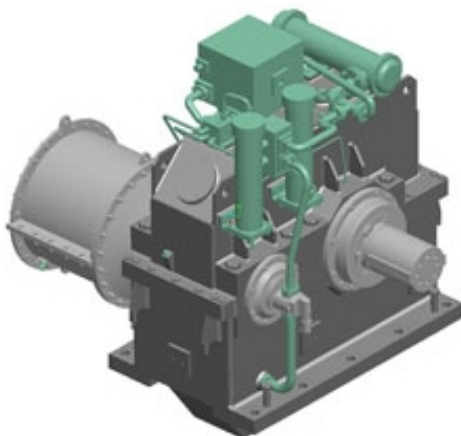
Submerged dredge pump gearbox



Apply for the submerged dredge pump driving unit of large cutter dredger and bucket wheel dredger. Features of work condition: big variation of sand and water density, deep water operation (max. operating depth: around 30m), high requirements for sand prevention and seal, super large torque and large pull.



Designing solution of submerged pump driving system of cutter dredger

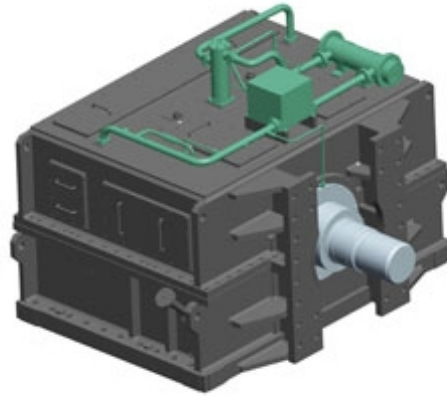


Submerged dredge pump gearbox(long shaft line):

- Input power: 2200kW;
- Input speed 1000rpm;
- Output speed 269rpm;
- Applies for 3500m³ cutter dredger;

Dredge pump & gearbox integrated-in-one
(Horizontal section)

- Input power: 2x1400kW;
- Input speed: 1000rpm;
- Output speed: 248rpm;
- Applies for 4500m³ cutter dredger;

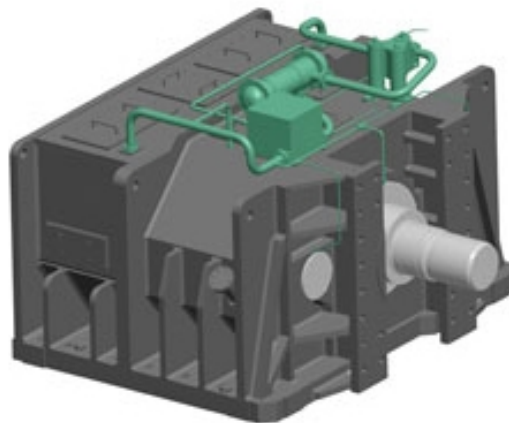


Dredge pump & gearbox integrated-in-one
(Horizontal section)

- Input power: 2x1400kW;
- Input speed: 1000rpm;
- Output speed: 248rpm;
- Applies for 4500m³ cutter dredger;

Dredge pump & gearbox integrated-in-one
(Vertical section)

- Input power: 2x1400kW;
- Input speed: 1000rpm;
- Output speed: 248rpm;
- Applies for 4500m³ cutter dredger;



Chongqing Hi-Sea Marine Equipment Import&Export Co.,Ltd.

Address: 20-5,General Chamber of Commerce Building, No.2 Hongjin Street, Yubei District, Chongqing, China

Email: machine@hiseamarine.com mitang0708@foxmail.com **Skype:** cncqtang **QQ:** 2278612160

TEL: +86-23-67032301 **FAX:**+86-23-67955123 **Mobile:** +86-18108354610 **Post Code:**401147

Website: www.hiseamarine.com www.chinahisea.com