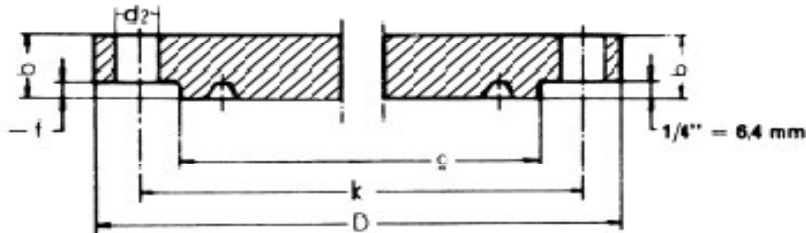


Forged Carbon Steel Blind Flanges Ring Type Joint - ASME B16.5

Nominal Pressure 900 Lbs / 1500 Lbs / 2500 Lbs
Material: ASTM A105

Drawing



Dimension

Forged Carbon Steel Blind Flanges / Ring Type Joint / ASME B16.5 900 Lbs									
ND	D	b	g	k	holes	d2	theor. Weight (kg)		
							black		
3"	241.3	38.1	155.4	190.5	8	25.4	13.100		
4"	292.1	44.4	180.8	234.9	8	31.7	26.900		
6"	381.0	55.6	241.3	317.5	12	31.7	47.400		
8"	469.9	63.5	307.8	393.7	12	38.1	91.000		
10"	546.1	69.8	362.0	469.9	16	38.1	110.000		
Forged Carbon Steel Blind Flanges / Ring Type Joint / ASME B16.5 1500 Lbs									
ND	D	b	g	k	holes	d2	theor. Weight (kg)		
							black		
1"	149.0	34.9	71.4	102.0	4	25.5	3.600		
1 1/2"	177.8	31.7	91.9	123.9	4	28.4	5.750		
2"	216.0	46.0	123.8	165.0	8	25.4	11.300		
3"	267.0	55.5	168.3	203.0	8	31.8	21.800		
4"	311.0	61.9	193.7	241.0	8	34.9	33.100		
6"	393.7	82.5	247.7	317.5	12	38.1	71.800		
8"	482.6	91.9	317.5	393.7	12	44.4	122.000		
Forged Carbon Steel Blind Flanges / Ring Type Joint / ASME B16.5 2500 Lbs									
ND	D	b	g	k	holes	d2	theor. Weight (kg)		
							black		
1/2"	133.0	36.5	65.1	88.9	4	22.2	3.200		
3/4"	139.7	31.8	73.2	95.3	4	22.4	3.500		
1"	159.0	41.2	82.5	108.0	4	25.4	5.000		
1 1/2"	203.2	44.5	114.3	146.1	4	31.8	10.400		
2"	235.0	58.7	133.3	171.0	8	28.6	17.700		
3"	305.0	76.2	168.3	229.0	8	34.9	39.000		
4"	356.0	87.3	203.2	273.0	8	41.3	61.200		
6"	483.0	120.7	279.4	368.0	8	54.0	156.000		
8"	552.5	127.0	339.9	438.2	12	53.8	214.000		